

PressKraft.

Partner for your Global Competitiveness!



PRESSKRAFT Engineering Automation LLP is an Indian based engineering automation company formed by an organization whose members have over a two decades of experience and expertise in Industrial automation and application, technology and services.

Offers - Industrial Products.

- Servo Press Units & Centering Device (Center Master)
- Hydro Pneumatic Products, (Hydro Pneumatic Press & Cylinders, Boosters (Air, Fluid & Gases)).
- Riveting Machines, Roll forming & Bushing Machines.

Sheet Metal Solutions

- Clinching, Punching, embossing & SPR.
- and Elements Installation (Nut & Stud Clinching).

Our Profile.

- Registered Office in Chennai & Pune, Sales agent in NCR.
- Office space of 2500 Sq. Ft in Chennai & Pune.
- Assembly & Testing facility @ (Tamilnadu) Trichy 6000 Sq. Ft shop area for sheet metal technology solutions and products assembly.
- Inhouse facility for Clinching, Nut Clinching, Riveting, etc. and trials and testing facility.
- Dedicated in-house design team & engineering facility.
- Quality Control and standards room, etc.
- Software: CAD / Solid Modelling /Software for Electrical circuits.



Our team and facility:



Channel Partners for....



1. History D. Friedrich – tradition for nearly 70 years



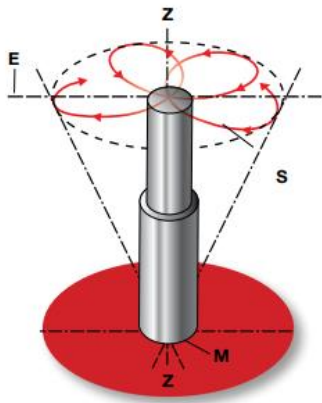
- 1948: Foundation of D. Friedrich Maschinen- und Werkzeugbau GmbH
- 1950 to 1960: On the way to engineering
- 1966: Invention of the Radial Point Riveting technology and issue of patent
- 1984: Presentation of the first CNC riveting machine worldwide
- 1990: supplier of the automotive industry with more than 50 employees
- 2000: certification to DIN ISO 9001
- 2005: Turnkey special-purpose machines including riveting technology
- 2011: CNC riveting machines with handling robot and parts feeding
- 2014: Delivery of the first Servo-Roll-forming machine



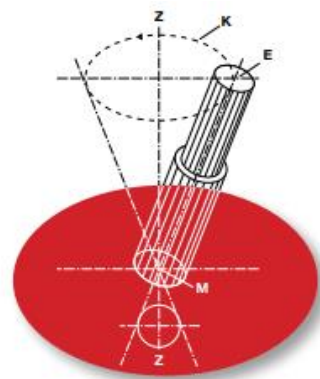
The company **Friedrich Maschinen- und Werkzeugbau GmbH** of Remshalden-Geradstetten has successfully conducted business in the fields of riveting technology and assembly automation.

Products;

- **Riveting Machines** - Radial Point Riveting and Orbital Riveting.
- **Roll Forming** - Machines and Technology.
- **Bushing Machines**.



Radial Riveting



Orbital Riveting



Roll Forming



Bushing M/C

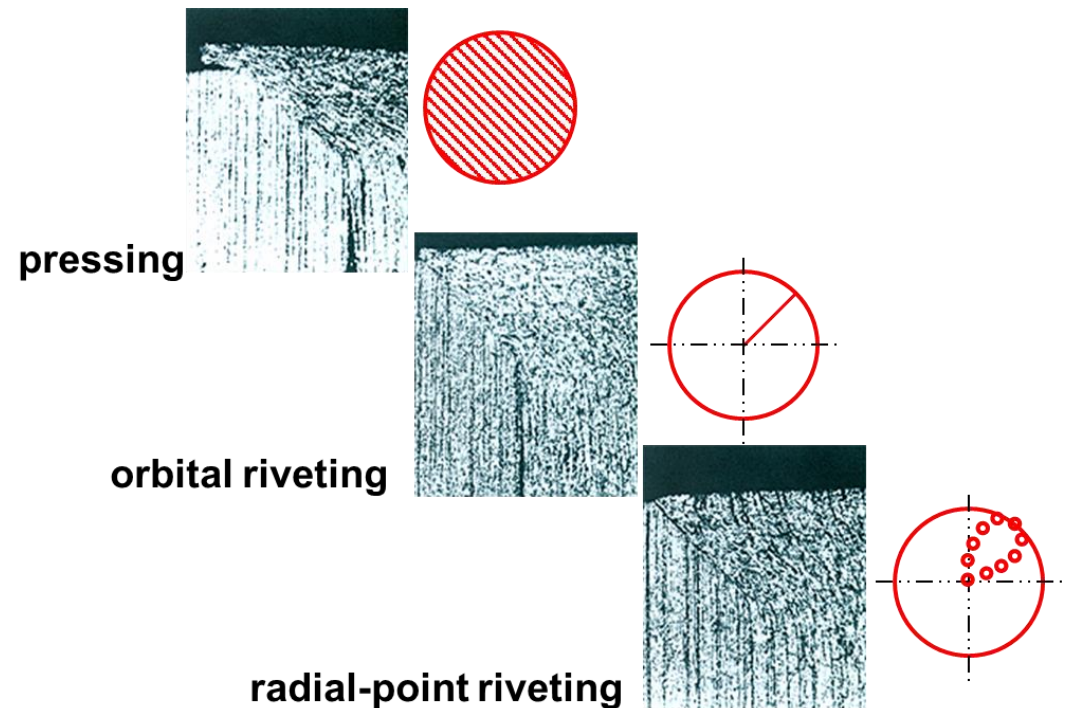
Radial Point Riveting

Advantages

- developed and patented in 1966 by FMW.
- hypocycloide or radial-point riveting movement has enormous advantages compared to pressing or orbital riveting:
- lesser axial force required for high riveting power
- low heat development and smooth closing head surface
- gentle change of the structural conditions
- no rotation of the riveting die → stamp marking is possible
- bearing stress is very good to determine.
- vertical position of riveting die is of advantage for automated die exchange and exact measurement systems

Almost no change in structural condition

a trademark of the radial-point riveting technology



Column Type Riveting Machines.

- Pneumatically operated
- Robust workmanship
- Universal use
- Machine table and pedestal made of grey cast iron



Pedestal Type Riveting Machines.

- Modular compact design
- Ergonomically designed
- Pneumatically- / hydraulically-operated



Riveting Units.

- Modular configuration
- Driving motor, adaptable to a number of installation variants
- Particularly suited for installation in special-purpose plants



Safety Riveting Machines & Special Purpose Riveting Machines.

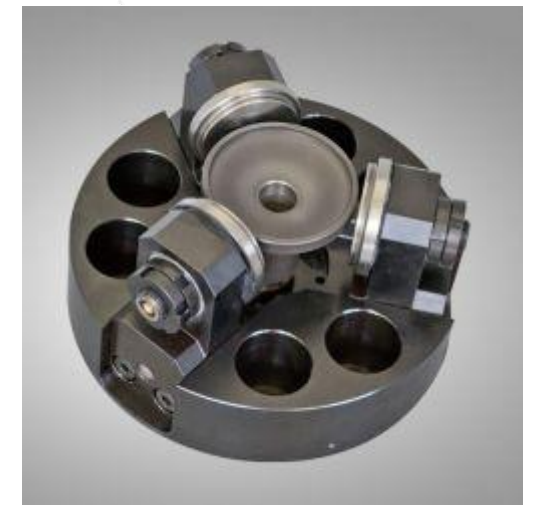
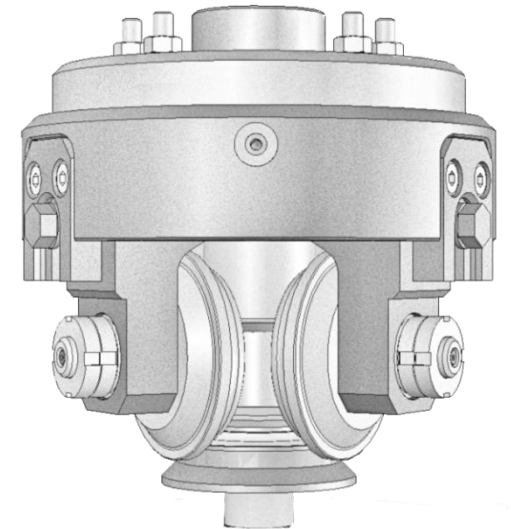
- Pneumatically operated
- Active accident prevention
- BG approved



Roll Forming Heads.

- types and sizes of roll-forming heads and roll-forming units:
- 3 standard sizes exist:
- VR2xx with NE21X (hydraulic feed up to 12 kN, max. stroke 80 mm)
- VR5xx with NE51X (hydraulic feed up to 40kN, max. stroke 72 mm)
- VR2xx with Y321 (electrical feed up to 18 kN, max. stroke 500 mm)

- fields of application:
- roll-forming diameters: $\varnothing 8$ to $\varnothing 120$ mm
- materials suited for roll-forming:
- steel, stainless steel, aluminum,
- pressure die cast (Al, Zn or brass alloys)



C&M Robotics, a company specializing in automatic assembly and press-fitting systems.

- Center Master, which automatically corrects center position errors occurred when various precision components are assembled (inserted/press-fitted).
- FLEXPRESS® used in cases of precision component assembly and automatic insertion.
- Graphic Indicator IGI Plus which provides superior functionality in press-fitting quality management.



PRODUCTS

Self-aligning and Correction Device

CENTER MASTER™

Center Master is an innovative device that dramatically improves the quality of assembly parts by compensating for (positional and/or angular) errors that occurs when assembling various precision parts.



| CENTER MASTER LINEUP |

A-Series
Non-forced assembly

Compensates for positional and angular error

A collection of five black A-Series devices of various sizes, arranged in a cluster.

LA-Series
Robotic assembly

Compensates for positional and angular error with lockup and unlock function

A collection of three black LA-Series devices, some with yellow locking pins inserted into their top flanges.

S/SS-Series
Loadcell embedded

Compensates for positional error with force measurement

A collection of five silver S/SS-Series devices. One is labeled 'S' and another 'SS'.

B/BS-Series
Press-fit

Compensates for positional error

A collection of five black B/BS-Series devices. One is labeled 'B' and another 'BS'.

T/TS-Series
Torque-transmission

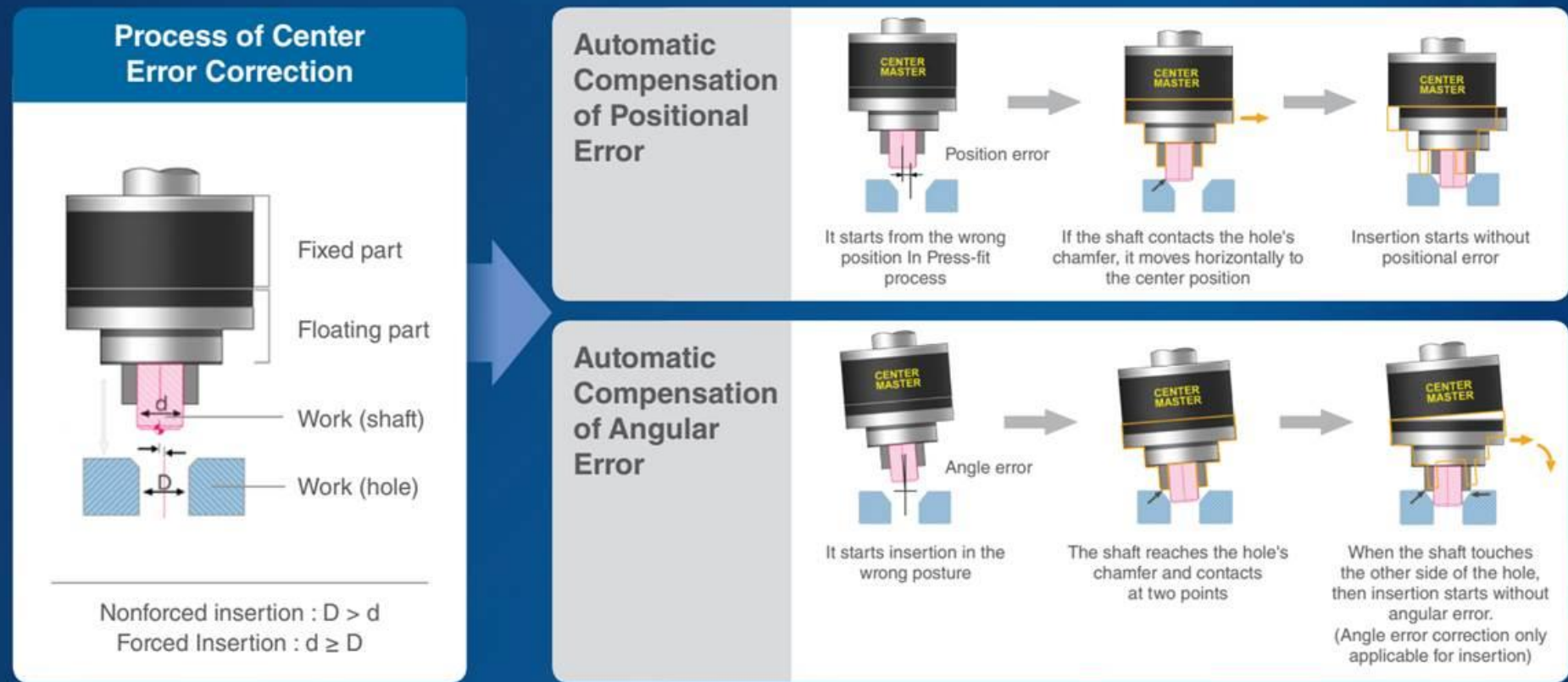
Compensates for positional error with torque transmission

A collection of five black T/TS-Series devices. One is labeled 'T' and another 'TS'.

CENTER MASTER® Self aligning and Correction Device

► Principal of correcting inaccurate position

Center Master compensates for positional and/or angular errors which are major causes of poor Press-fit



FlexPress® EM·SEM Series



Features

- Standardization.
- Highly-precise press-fitting system
- User friendly intuitive interface

1. Highly-precise press-fitting system

- Repeatability 0.01 mm
- Location set minimum unit 0.001 mm
- Force se < 0.5% of F.S

2. Superior data analysis ability

- Support various functions which effectively manage press-fitting quality
- Support various searching methods
- Several work data indicated in graphs

3. User friendly intuitive interface

- - Convenient model set with the use of patterns
- - Motion simulation for the selected model is supported

C&M Robotics – Servo Press Unit – for Precise Pressing.

FlexPress® EM·SEM Series



Features

4. Real-time quality management

- have up to hundred data models
- Upto eight operation results can be checked simultaneously

5. Various and wide range of models

- Nine models for maximum thrust power ranging from 0.2 ton to 20 ton
- Five stroke types ranging from 150 mm to 350 mm, 50 mm gap (150 mm - 400 mm for 20 ton)

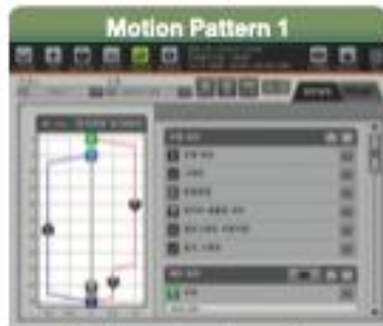
6. Controlling external devices

- utilize digital input/output contact module through using Modbus TCP
- Control of external devices (PLC and others) is possible through using fieldbus and Ethernet communication

C&M Robotics – Servo Press Unit – User Interface/Data Monitoring.



Selects pattern icon



Simple motion pattern setting



Complex motion pattern setting



Confirms selected motions



Judgment conditions setting



Displays results in graph and pass/fail decision

C&M Robotics – Graphic Display Unit – Process Monitoring.

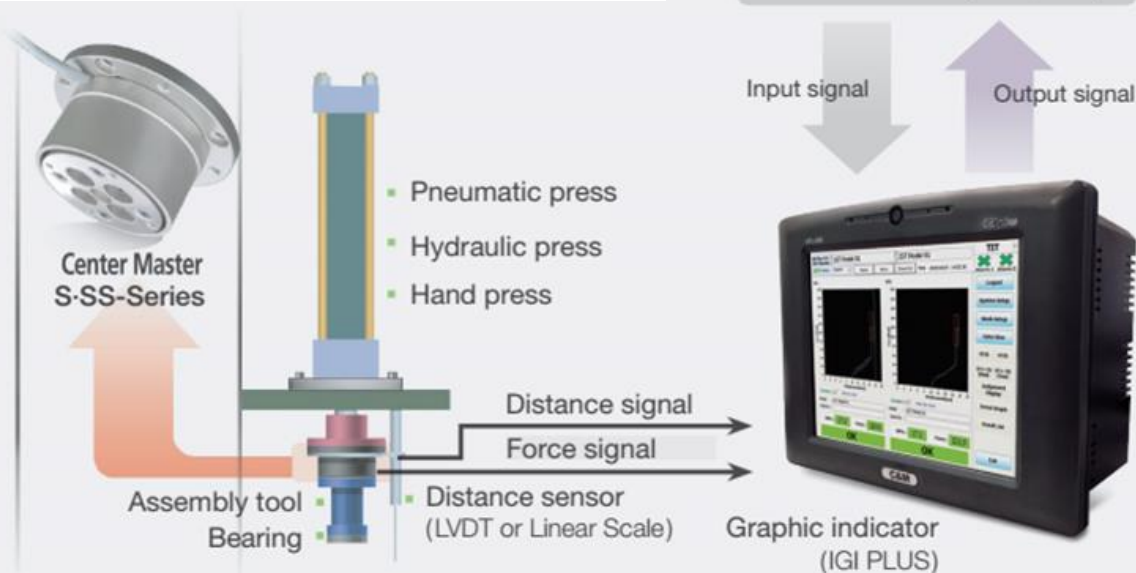
Application

Intelligent multi-function

- Digital I/O : In 32, Out 32
- Embedded amplifier (1/16~4096)
- 4 ch. sensors (force/distance/time)
- 24 bit ADC resolution

• In the process of parts assembly, IGI Plus monitors work data and judges pass or fail based on the judgment conditions.

• C&M's Center Master S/SS-Series (load cell built-in type) can replace general load cell to automatically correct the center position error between parts while measuring press force, thereby preventing assembly defects.



Intelligent Graphic Indicator

IGI Plus™



July® Industrial Limited, its predecessor called Changhua Machinery Factory, was founded in Taiwan in 1985, then moved to Dongguan in 2008. Now July® is a professional manufacturer of various hydro-pneumatic products, which has two factories

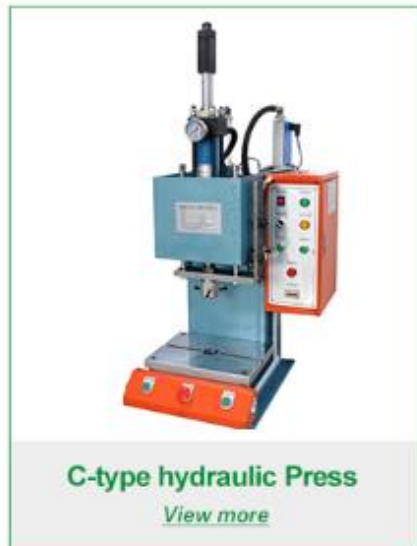
13⁺ YEARS

OF RICH EXPERIENCE

The main products of the company are: Hydro-pneumatic Cylinder, CNC Knife-fighting Cylinder, Air-driven Gas/Liquid Pump, Pneumatic Punch, Hydro-pneumatic Pressurization Equipment, or according to the needs of customers for the non-standard automatic customized pressure installation equipment!

[View more](#) →





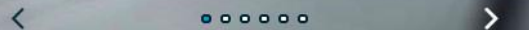
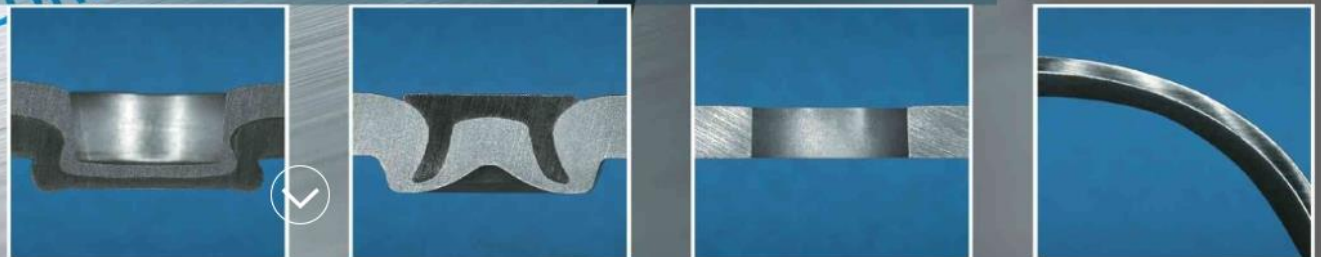
Eckold GmbH & Co. KG
Germany, (St. Andreasberg)
founded in 1936

ECKOLD®

ECKOLD

The sheet metal connection

ECKOLD®
The sheet metal connection



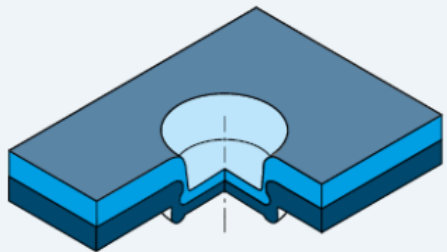
Our future technology is clinching
(press joining)

Here we want to maintain and expand
our position as technology leader.

FROM ALUMINIUM TO STAINLESS STEEL – CLINCHING
JOINS THEM ALL

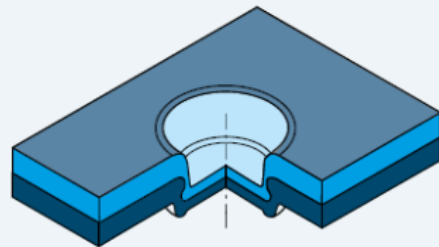


R-DF clinching



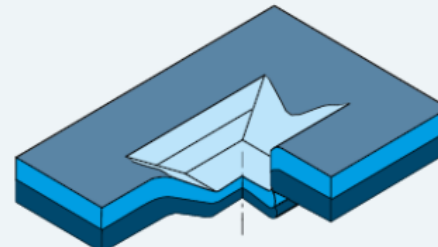
Clinching type R-DF, round clinching element

G-DF clinching



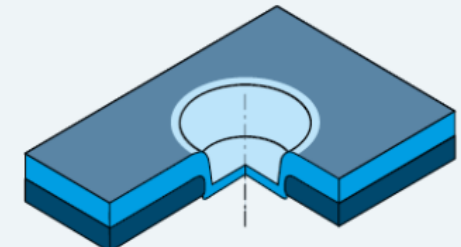
Clinching type G-DF, round clinching element

S-DF clinching



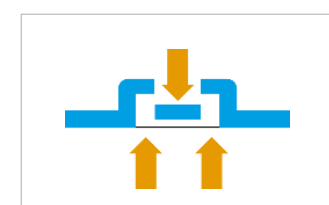
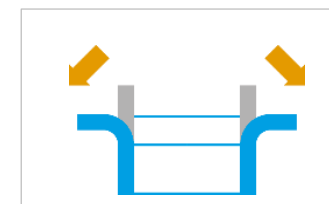
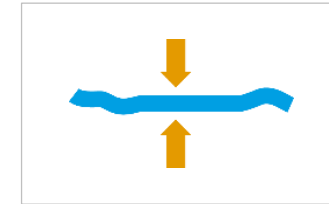
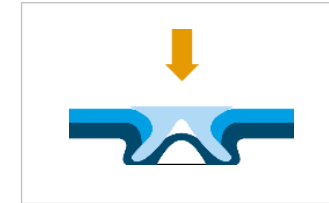
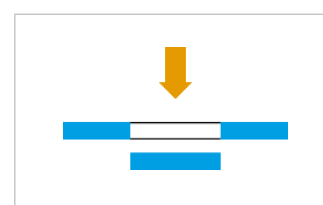
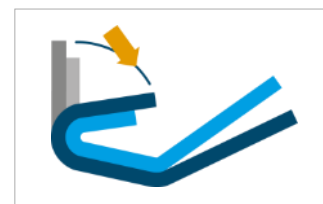
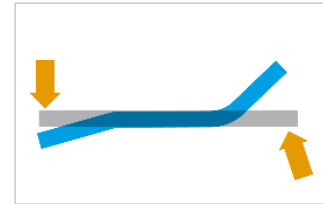
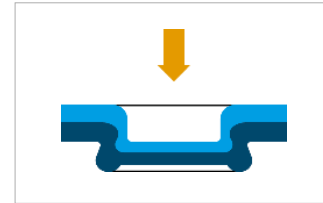
Clinching type S-DF, beam-shaped clinching element

CONFIX clinching



Clinching type CONFIX, round clinching element

- Clinching (press joining)
- Self piercing riveting units
- Forming
 - Shrinking and stretching
 - Burnishing
 - Straightening
 - Seamclosing
 - Flanging
 - Combined punching and embossing
- Punching



- Automobile manufacturers and suppliers
- Car body manufacturing
- Household appliances (white industry)
- Aircraft construction
- Air-conditioning and ventilation technique
- Small trade (tinsmith/plumber/roofer etc.)
- Shipbuilding (shipyards)





Product portfolio

The key to our success is our comprehensive product portfolio

- Portable, hand-held devices

*Portable clinching
frame*

MCD 30/50 AH



*Portable clinching
pliers*

MZD 25/3 PH



*Portable clinching
frame*

MCD 30/5 PH



*Portable clinching
pliers*

MZD 45/35 P

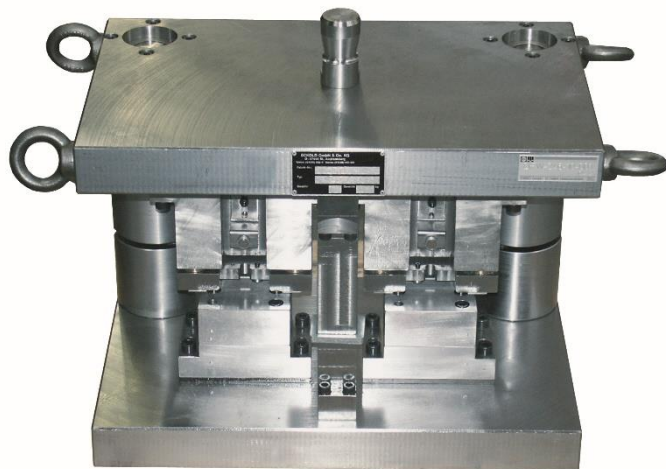


PHD-001 pressure booster

Product portfolio

The key to our success is our comprehensive product portfolio

- Stationary machines



Pressing tools



DFG 500/60



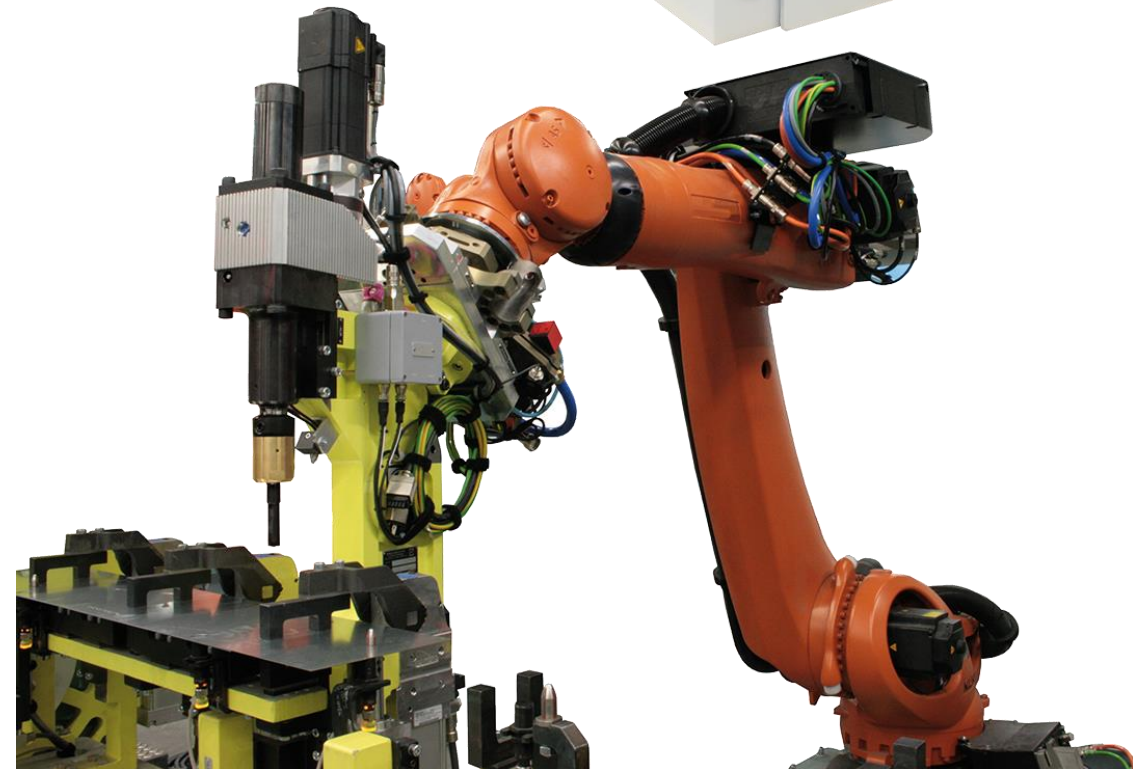
Multi-function machines

MFG 500/150 E

Product portfolio

The key to our success is our comprehensive product portfolio

- Servo motor-driven clinching frame system



Product portfolio

The key to our success is our comprehensive product portfolio

- Clinching fixtures and plants



Example



Automotive industries & suppliers

- Bonnet
Servo motor-driven clinching system
DFB-800 clinching frame
DFB-801 clinching frame
EM-011 control cabinet



Example



Ventilation and ducting industries

- Air ducts

1 DFG 500/150 clinching machine



Products – Stationary machines

PressKraft



Clinching



Self-piercing Riveting



Punching



Forming



Embossing



Press-in joining



Punching fixture for rear axle frame - Automotive Industry

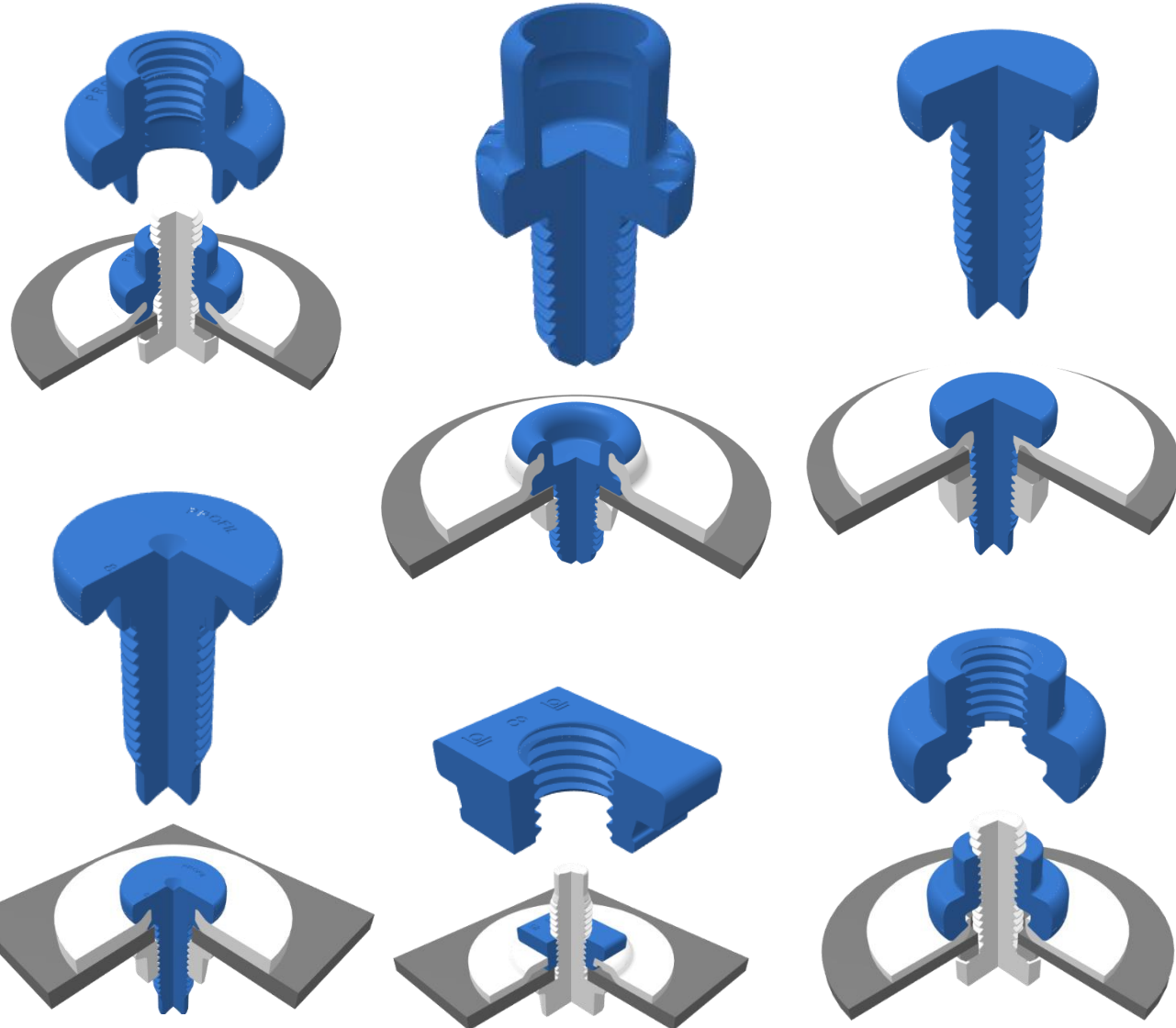
PressKraft



Embossing and punching frame - Automotive industry







PROFIL manufactures support fasteners such as self-piercing rivet nuts and self-piercing rivet studs as well as rivet fasteners and press-in fasteners that are attached to formed sheet metal parts.

Although there are many element types, our insertion process comes down to 4 basic elements:

- [Self-clinching](#) elements, which deform the component
- [Self-piercing](#) elements, which punch their own hole
- [Press-in](#) elements, which are inserted into an existing hole
- [Riveting](#) elements which clamp themselves into the pre-punched metal when being inserted



Self Pierce Rivet Studs Types: PFS, SBF, SBK, KSB



Clinch Studs Type: EBF



Rivet Nuts Types: RND, RSN, RSF, RSK, REN



Self Pierce Clinch Nuts Types: MHN, MHD, A9N

Through our long-standing cooperation with fastener suppliers and manufacturers, PressKraft is a complete partner in supplying the perfect system solution. Our expertise provides you with a one-stop source for processing your elements.

PRESSKRAFT provides expertise in pressing elements into a given part. In addition to standard versions, we can also manufacture customized press to suit your application. The best process and application for fastener insertion is defined by the element itself and its design.

Fully automatic placement



Robot-controlled placement



Manual insertion procedure



Lutz Precision – Tipped for Excellence!



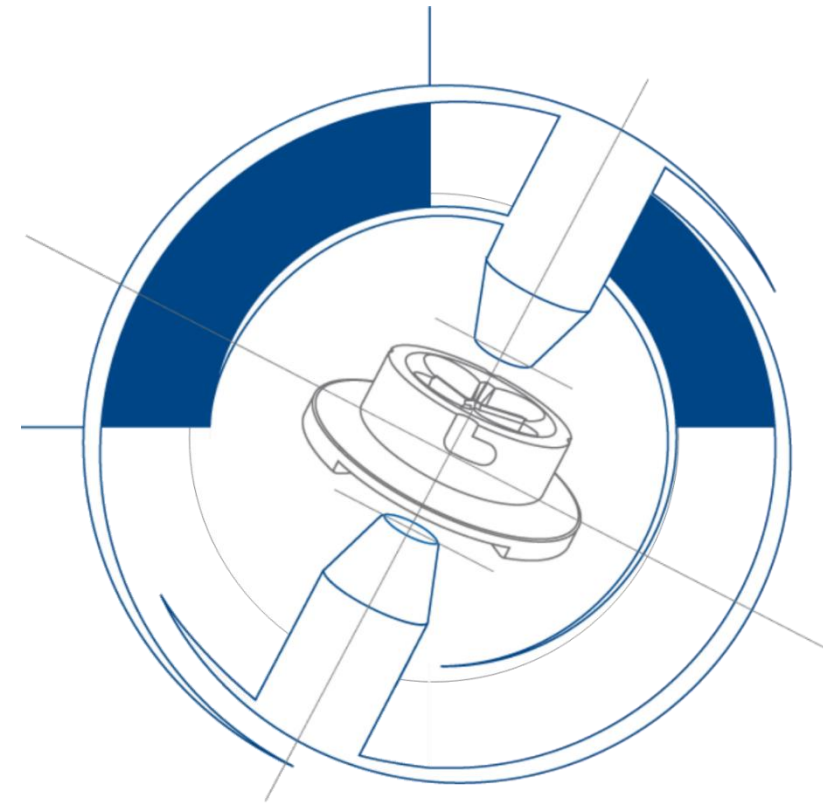
LUTZ Precision is one of the world's leading suppliers of tip dressers and cap changers for the automotive Industry.

Lutz Precision k.s.

Karloveská 63
841 04 Bratislava
Slovakia

Bratislava is the production center for Lutz Group worldwide. 100% manufacturing made in-house to meet all necessary specification about tolerances, quality and accuracy.

Allows Lutz to supply machines to most automotive OEM's, Tier 1 7 Tiers 2 companies.



Lutz Precision - Products - Tip Dresser, Stationary

Tip Dresser, Stationary – 10.36. Series and HS ALU Applications Series

field of operation: on robot welding guns

type: stand-alone

setup: single head product
(including 1 milling tool)

drive: electrically driven

From the simple tip dresser with stand, motor, gearbox with integrated suction, milling unit, and control box, the machine can be upgraded by means of various additional parts.

These include, for example, Profinet and Interbus connections, a rotation query, etc.



Lutz Precision - Products – Electrical Swing Arm – Tip Dresser.

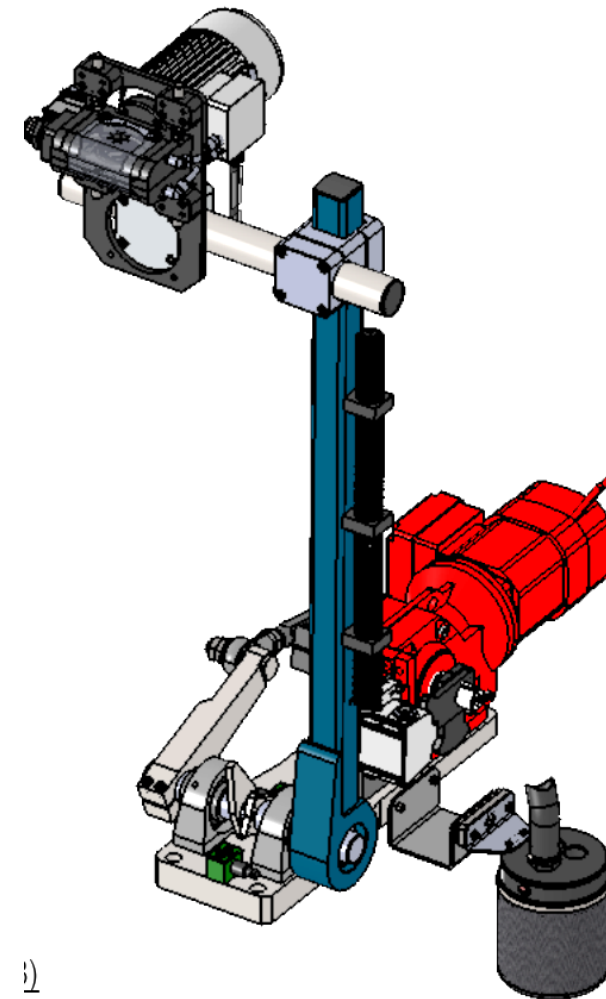
Electrical Swing Arm Tip Dresser - E2C

field of operation: on pedestal welding guns

type: dump-in / swivel system

setup: single head product
(including 1 milling tool)

drive: electrically driven



Lutz Precision - Products – Electrode Management Center.

Electrode Management Center – series 10.67 and 10.68

field of operation: on robot welding guns

type: Standalone combi system (for automated electrode tip dressing and tip changing).

setup: dual head product (including 1 milling tool + 1 cap changing head)

drive: electrically driven

Advantage: 2-IN-1, which means two processes (tip dressing and tip changing) - in - 1 unit (BKS 5810)

The advantages are obvious:

automated welding of up to 100,000 welding points without manual intervention

lowest cycle times of the change process, thus no standstill
high process reliability through permanent monitoring of all work steps



Lutz Precision - Products – Cutter.

Milling Tools and More – Series 3

we have worldwide experience in the field of electrode cap materials and the matching milling tools. We currently have a portfolio of 2,865 different combinations of milling tools in our product range, and that number is steadily increasing.

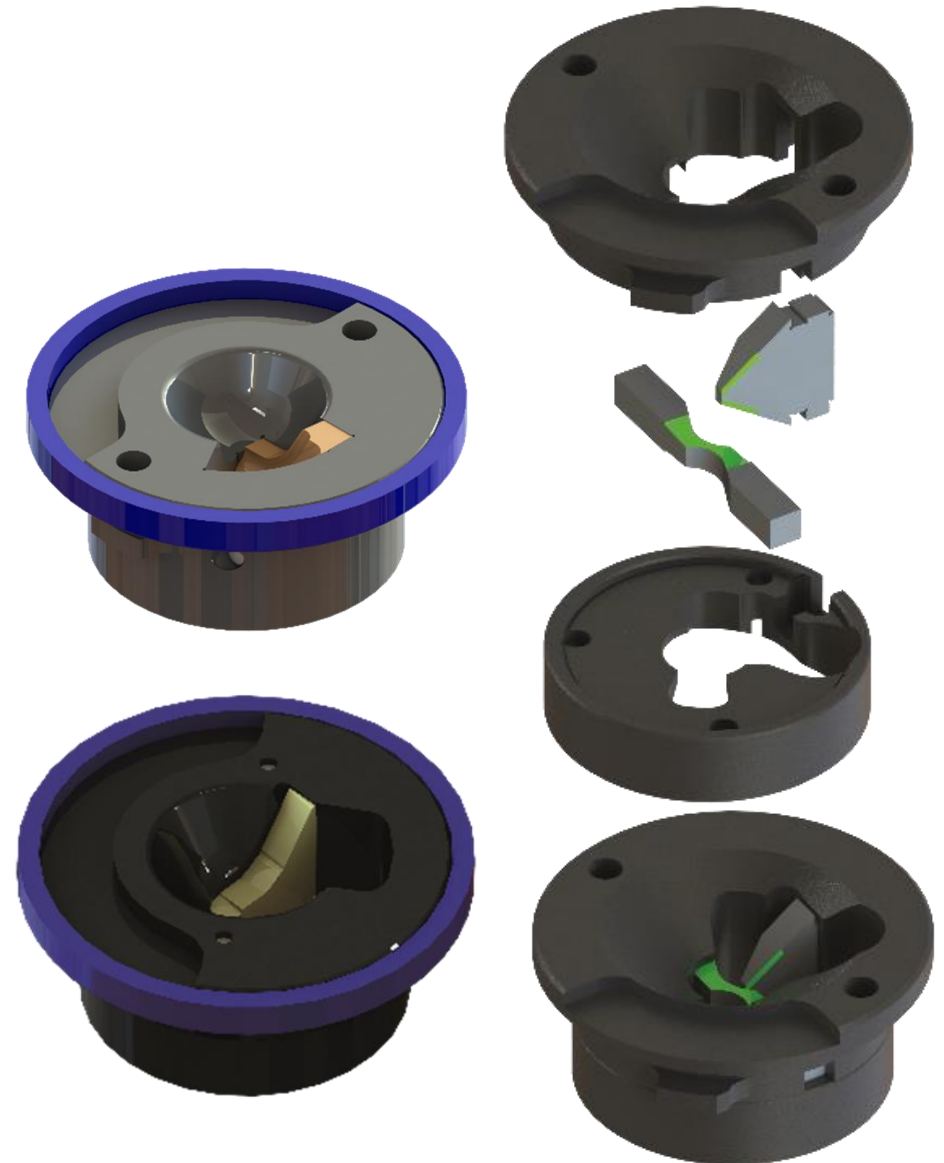
Our Milling tools.

Single Blade Cutter

Single Blade Cutter with Chip Breaker.

Two Blade Cutter.

Milling Systems for Aluminium Welding



Meeting with Partners.



Our Esteemed Customers.



Thankyou.

PressKraft

Contact Us:
Mr. Deepak
Manikandan
PressKraft Engg Automation
LLP

Sales Office – Chennai.
Our Works @ Pune.

(Deepak):+91 96000 42512
+91 99520 80412

Email: deepak@pkraft.in
sales@pkraft.in



486369622